

# abbotsford christian middle & secondary school

1413

## client

Abbotsford Christian  
School Society  
Julius Siebenga, Executive Director  
604 755 8103

## location

Abbotsford

## size

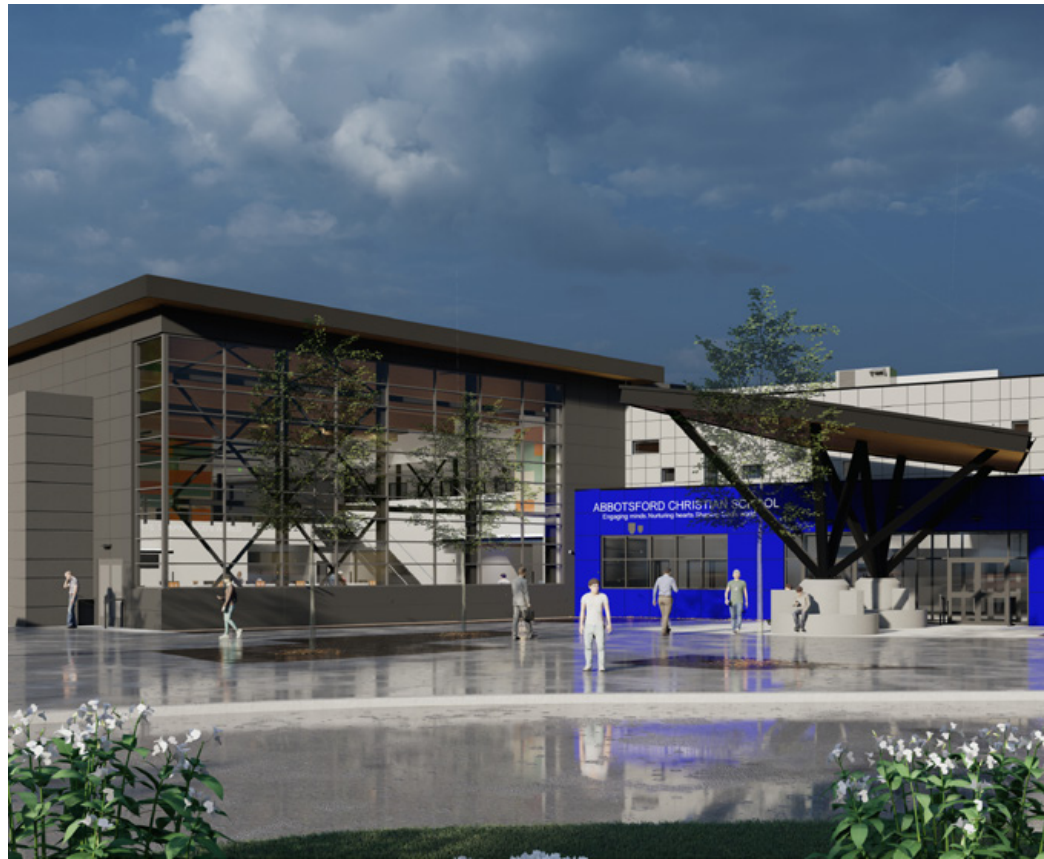
13,685 m<sup>2</sup>

## value

\$21 million

## status

Complete



**revitalizing an  
aging facility  
to incorporate 21st  
century learning**  
creating a christ-centered,  
innovative educational  
facility



In response to their aging facilities and the need for new physical environments supporting 21st Century Learning, SOA was approached by the Abbotsford Christian School Society to undertake a complete facilities analysis, funding campaign and feasibility study for a new \$21 million addition and upgrade to the Abbotsford Christian Middle & Secondary School.

SOA's extensive facility analysis and feasibility report reviews in detail the current conditions of the school and site, which has been added to many times since the original 1960's building. With the assistance of structural, mechanical, electrical, civil, hazmat, geotechnical and real-estate specialists, SOA was able to determine and recommend a feasible course of action for the Owner based on derelict areas being demolished and replaced, newer areas being retained and other areas receiving major renovations and upgrades. The assessment led to the development of 12 unique redevelopment options; from consolidating the school onto one site to partial demolition with renovations and additions, which has been since narrowed to 1 preferred schematic design. This project is currently under construction.

